



Gilbert & Hall

DEVELOPMENTS
www.gilbertandhall.co.uk

FOR FURTHER INFORMATION, PLEASE CALL THE MARKETING SUITE
Tel: 0115 968 3288
www.angloscotianmills.co.uk

THESE PARTICULARS ARE THOUGHT TO BE MATERIALLY CORRECT THOUGH PLANS AND SPECIFICATION MAY BE SUBJECT TO ALTERATION AND THEY DO NOT FORM PART OF ANY CONTRACT.
FRONT COVER DEPICTS COMPUTER GENERATED IMAGE. DESIGN & PRINT: STILLMAN DESIGN. MAY 06. T: 0115 948 7969.



ANGLO SCOTIAN MILLS
BEESTON NOTTINGHAM

PHASE II: FRANCIS MILL - A CONVERSION OF A 19TH CENTURY GRADE II LISTED MILL BUILDING

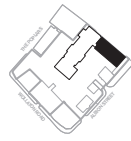
FLOOR PLANS

Another development by

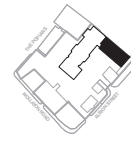
Gilbert & Hall

DEVELOPMENTS
www.gilbertandhall.co.uk

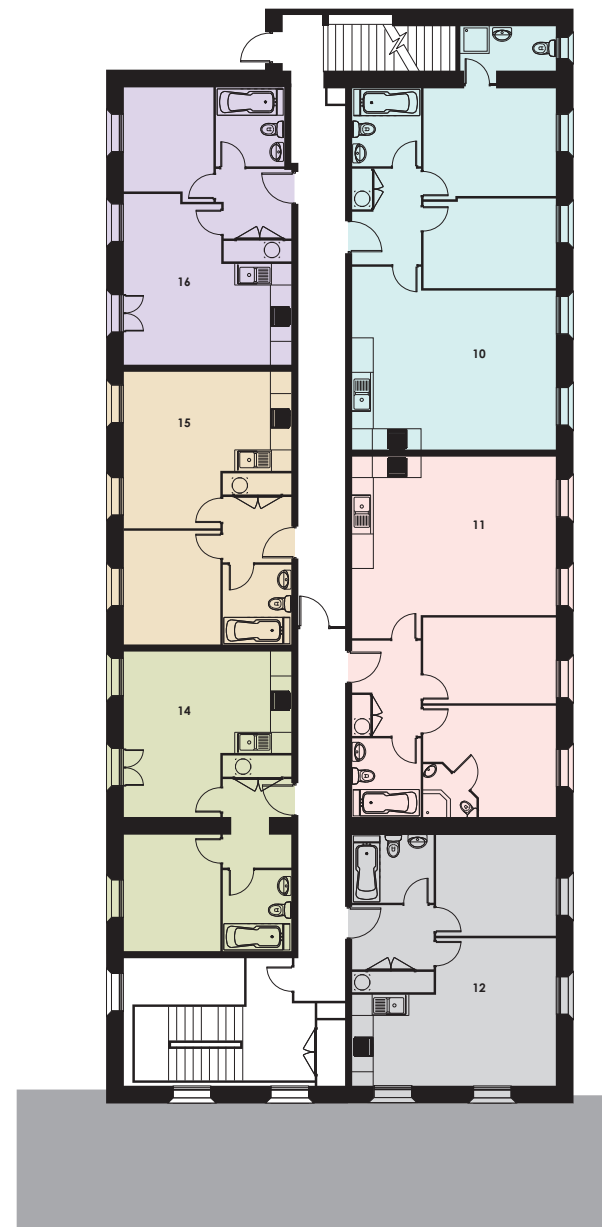
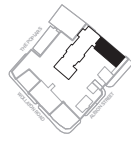
FRANCIS MILL
GROUND FLOOR



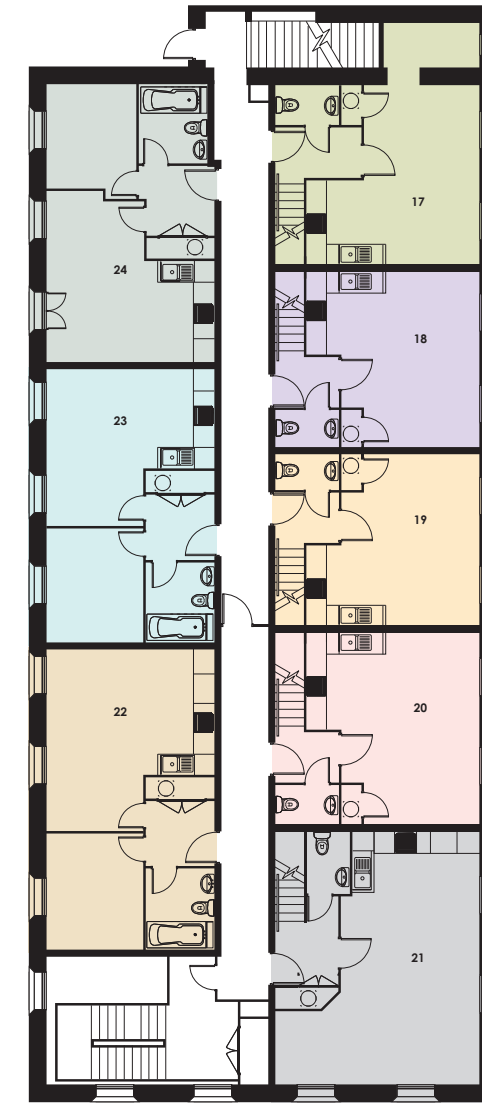
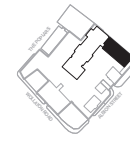
FRANCIS MILL
MEZZANINE (FIRST FLOOR)



FRANCIS MILL
SECOND FLOOR



FRANCIS MILL
THIRD FLOOR



FRANCIS MILL
DUPLEX FLOOR

